



Tuck Mill
Shirenewton | Chepstow | Monmouthshire | NP16 6BU

STEP INSIDE

Tuck Mill

Step inside:

Stone steps lead to Tuck Mill's entrance, which opens into a lobby and on into a spacious and light-filled kitchen/dining room.

Perfect for family life and entertaining, this generous open plan area has windows on two sides providing lovely views into the garden and a vaulted ceiling with exposed beams and trusses.

Farmhouse-style white-painted units topped by wooden work surfaces and a hard tile floor provide a combination of rustic charm and contemporary comfort. There's a range-style cooker, topped with an extraction fan, together with a variety of appliances. A utility room and a larder is situated close by.

Steps from the kitchen lead to the expansive sitting room, which has plenty of windows to let in the light and frame views of the garden. There's a contemporary recessed woodburner providing warmth and feelings of contentment, while one end of the room has been fitted with useful bookcases. The amount of space available is sufficient to accommodate a dining table if desired.

French doors lead from the sitting room to a north and west-facing terrace, the perfect place to sit with a mid-morning coffee, a lunch or a gin and tonic at sunset.

Completing the line up on the upper level of the house is the master bedroom, which has a walk-in wardrobe and an en suite with a shower. In addition there's plenty of useful loft space.

Both this upper floor bedroom and the sitting room have the same vaulted ceiling and exposed beams and trusses found in the kitchen, adding to the uplifting atmosphere that pervades the house.

Stairs lead from the sitting room to the lower floor, on which there are three generously sized bedrooms, one of which has an en suite. There's also a large family bathroom with a bath and a shower.

Tuck Mill is filled with character and exudes warmth. This stone building dating back to the 18th century was once used for producing wool and, later, paper. It was lovingly converted into a home by the current owners just after the Millennium.

All in all this countryside home combines rural charm with modern comfort. Under the balcony is a spacious store room that could be used as a workshop and wine cellar.









SELLER INSIGHT

“Tuck Mill has been our cherished home for the past 22 years. What first drew us in was the incredible potential - it was a barn and once a mill, and we saw the opportunity to create something truly special. The location was everything we had hoped for, ticking all the boxes: a peaceful setting, a beautiful outlook, and most of all, water nearby - with the Mounton Brook running through the garden. We also loved the idea of being able to live predominantly on one level, which this home allows so well.”

“Since moving in, we’ve completely transformed the property. We essentially built it from scratch, reconfiguring the layout to suit modern living while keeping the character. We installed the oak beamed trusses ourselves, and the whole space is wonderfully light and airy. The double glass doors in the sitting room allow natural light to pour in.”

“It’s hard to choose a favourite room - we enjoy every part of the house. We’ve made it extremely comfortable, with underfloor heating throughout. The lounge has a wood-burning stove, perfect for cosy evenings, and the oak-framed windows and natural wood finishes give the house a warm and cosy feel.”

“The garden is a true haven. We’ve spent many happy hours here over the years. There are areas left wild to encourage nature, as well as more cultivated spaces, and we’ve loved watching rare birds visit the stream. It’s wonderfully private, and so peaceful - an ideal spot for relaxing.”

“The house has also been perfect for entertaining. It flows beautifully inside and out, and we’ve had many family gatherings here, including our 50th wedding anniversary, which we celebrated in the garden.”

“There’s a strong village spirit, with plenty to get involved in - a fantastic primary school, an active church, a lively local pub that’s very much the heart of the village, and beautiful walks all around. The neighbours are friendly and supportive, but everyone respects each other’s space, which creates a lovely balance.”

“What I’ll miss most is the generous space - room for everything we need, and for all the memories we’ve made here. It’s been a very happy home, and we feel fortunate to have had so many good years in it. The single-floor living has been a real blessing, while still offering plenty of room for guests to come and stay. We’re now moving to be closer to family, ready for the next chapter.” *

* These comments are the personal views of the current owner and are included as an insight into life at the property. They have not been independently verified, should not be relied on without verification and do not necessarily reflect the views of the agent.

Location and situation:

Tuck Mill sits in a valley on the edge of picturesque Shirenewton, also known as Trenewydd Gelli Farch. The village, which has a church dating back to the 13th century, is tucked away in Monmouthshire's rolling hills, 500 feet above sea level, and enjoys views of the Severn Estuary and Bristol Channel. It has good local amenities and transport links, with the M48 and Severn Bridge offering quick access to Bristol and the M4 corridor.

The closest town is Chepstow, which is around four miles away and takes about 10 minutes to reach by car. This historic market town has supermarkets, restaurants, independent shops and a castle. Its railway station offers services to Cardiff, Newport, Gloucester and onwards to London Paddington. Chepstow also has a hospital and several doctors surgeries. Caldicot, nine miles/15 to 20 minutes away, has more shops, along with healthcare and leisure facilities.

Caldicot, nine miles/15 to 20 minutes away, has more shops, along with healthcare and leisure facilities.

Newport is 18 miles away and offers train services to Cardiff and London. Across the River Severn, Bristol is 22 miles away and can be reached within around 40 minutes using the M48. This major cultural and commercial centre has an international airport close by.

Cardiff, the capital of Wales, is well known for shopping and culture and has excellent rail links. It takes around 45 minutes to travel the 32 miles to get there.

Shirenewton offers a good choice of local and regional schools:

Primary Education:

- Shirenewton Primary School – Located in the village itself, this well-regarded school has a strong reputation for academic achievement and community involvement.
- The Dell Primary School (Chepstow) – Approx. 4 miles away, also highly rated by local parents.

Secondary Education:

- Chepstow School – The main secondary school for the area, offering a comprehensive curriculum and sixth form. Around 4 miles from Shirenewton.
- Caldicot School – Another secondary option around 9 miles away.
- Monmouth Comprehensive School – Approx. 15 miles away and known for strong academic performance.

Independent/Private Schools:

- St John's-on-the-Hill (Chepstow) – A well-established independent prep school.
- Haberdashers' Monmouth Schools – A prestigious group of independent schools for boys and girls, around 15 miles away.
- Rougemont School (Newport) – A co-educational independent school around 20 miles away.

















STEP OUTSIDE

Tuck Mill

Step outside:

Set within a generous plot of approximately 0.39 acres, with the Mounton Brook babbling through it, the gardens surrounding Tuck Mill are an idyllic sanctuary.

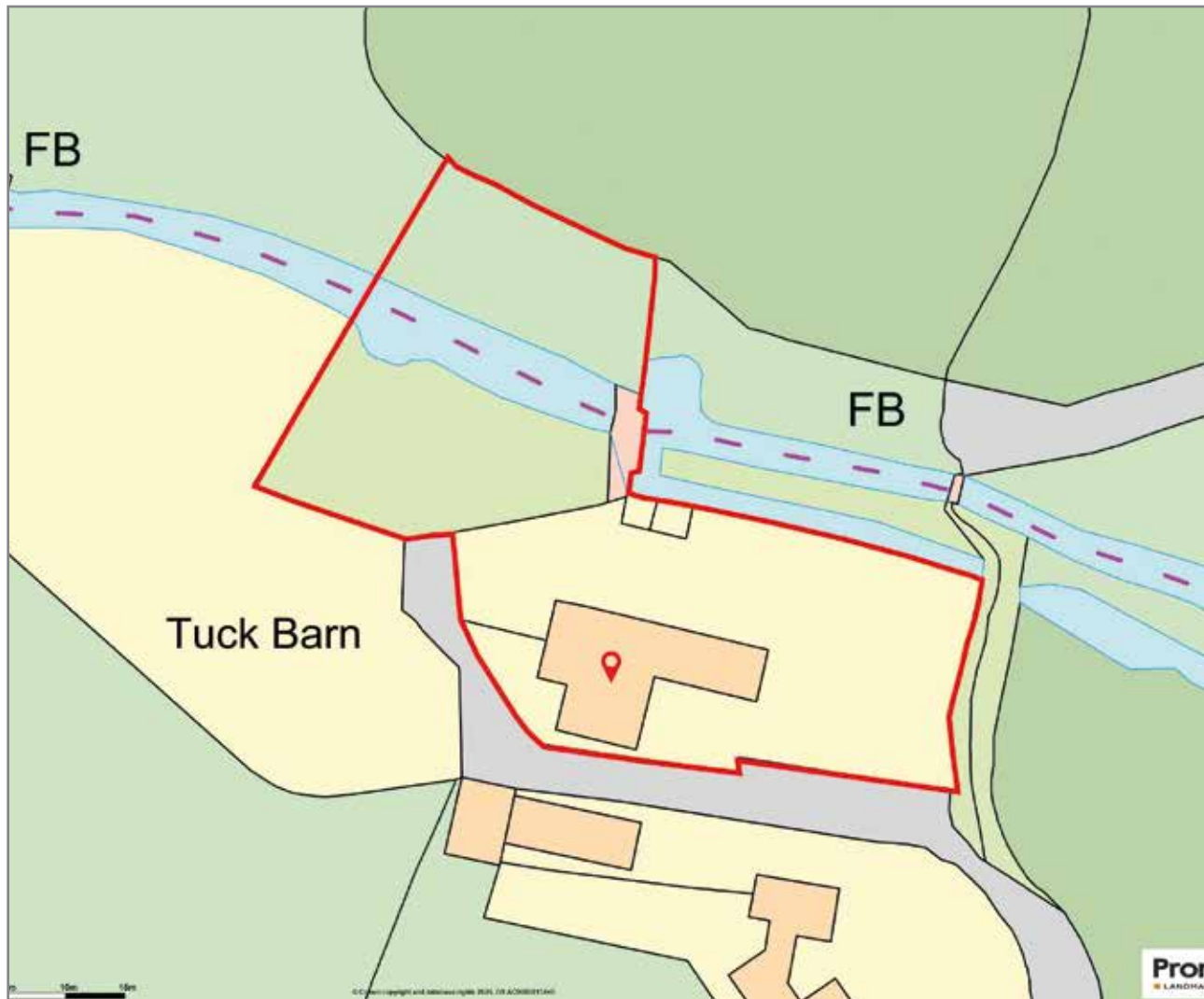
There's a wisteria-draped courtyard with flagstones just outside the front door and a lawned garden at the side of the house. The enchanting rear garden is filled with mature shrubs, climbing roses and beautifully planted borders.

This peaceful space continues beyond the house and through a charming gate into what used to be an orchard. Here the brook winds gently through the landscape, its gentle sounds providing a tranquil backdrop. Across the water lies another small parcel of land.

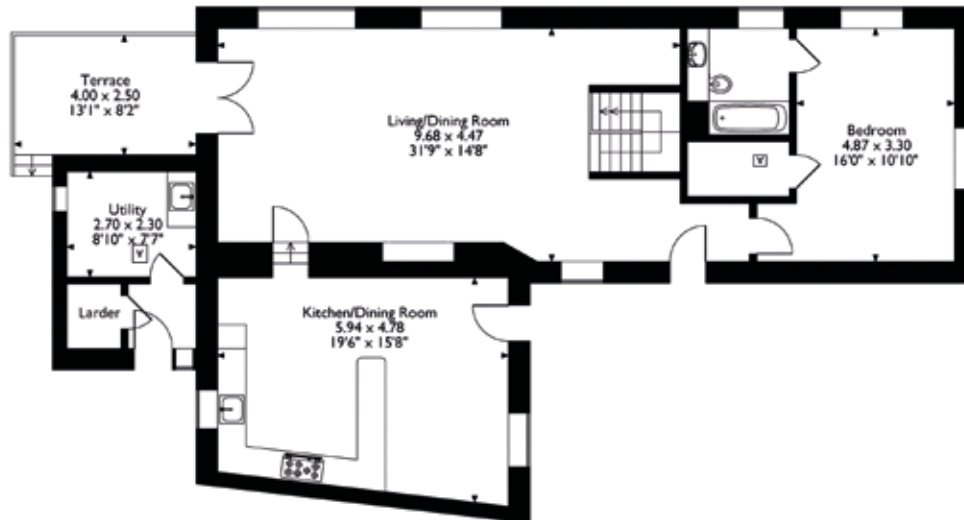
The entire garden is surrounded by mature trees, enhancing the feeling of privacy.

Tuck Mill lies off a quiet lane accessed from a main road and has plenty of parking close to the house.

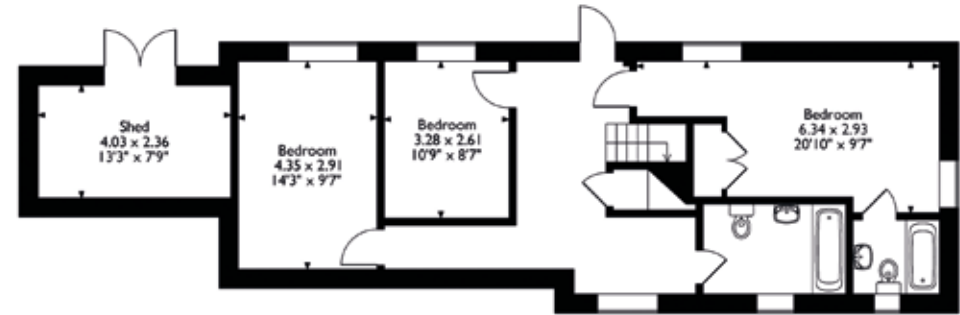




Tuck Mill, Shirenewton, Chepstow
 Approximate Gross Internal Area
 Main House = 184 Sq M/1981 Sq Ft
 Total = 194 Sq M/2089 Sq Ft



Ground Floor (Upper Level)



Lower Level Underneath The Ground Floor

Please note that the location of doors, windows and other items are approximate and this floorplan is to be used for illustrative purposes only. Unauthorized reproduction is prohibited.

Tenure: Freehold
 Council Tax Band: H



follow Fine & Country Chepstow on



Fine & Country Chepstow
30 High Street, Chepstow, Monmouthshire, NP16 5LJ
01291 629799 | chepstow@fineandcountry.com

