



Ty Y Teili

Foundry View | Aberdare | Rhondda Cynon Taff | CF44 6DW

FINE & COUNTRY



Step inside

Ty Y Teili

Hidden away along a small, tree-lined residential road that meanders up the wooded Aman valley and through the village of Cwmaman, this substantial, detached family home offers views and a party garden outside, and an abundance of well-designed spaces inside.

Behind the large gates there's a generous driveway and double garage, which is also hiding a sauna as well as a home for the cars, plus a front garden that is party central with multiple seating areas and an indoor bar.

This bonus building is so well done, with a bar, seating areas, TV and even a log burner that ensures it's an all year-round destination, that it can surely be called the owner's very own mini pub.

Around to the rear garden to discover more opportunity for socialising but also finding some peace and quiet on the private and sheltered split-level terrace or in the inviting hot tub that has a roof, so can tempt a visit even in the rain or cold weather.

Inside this handsome home the pleasing symmetrical design offers a grand hallway which provides access to the substantial kitchen lounge diner with doors out to the fabulous garden, as well as a separate and cosier sitting room.

The house has been designed by the owner to be practical as well as sociable with a home office, boot room, storage room and utility room all welcome spaces that ensure this busy family home runs smoothly.

Upstairs the first floor boasts four double bedrooms all with an ensuite and dressing room or walk-in wardrobe.

A surprise extra staircase leads to hidden accommodation - a fifth bedroom on the top floor that can boast a kitchenette and ensuite as well as the best views from this elevated position - it's a space so special it's possible you might not see the occupant for days if the fridge is fully stocked.

Called Ty T Teili, this fabulous family home is nestled into the hillside in the Aman Valley adjacent to the Cynon Valley and can reward you for finding it off the country lane on the way to Cwmaman with roof-top and wooded valley views.

The property's tucked away position does not mean it is not well connected, with the village at the top of the valley offering pubs and play areas, doctors' surgery and barber shop, plus Cwmaman Public Hall and Institute which includes a theatre and gym.

Aberdare and Mountain Ash are just a short drive away offering further amenities and facilities including The Coliseum Theatre, Aberdare Park, and Dare Valley Country Park and Gravity Bike Park.

Commuting to work or socialising further afield to Cardiff to the south via car uses the nearby A470 or there is a regular bus service to the capital.

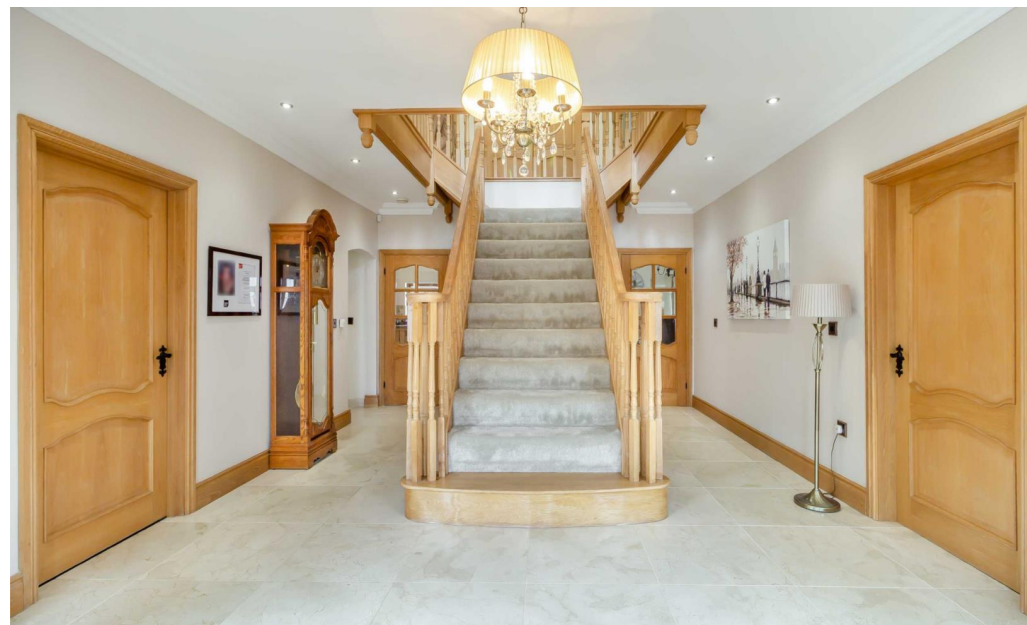
But the joy of living in this location is the access to the valley itself with footpaths through trees leading to several reservoirs as well as a wealth of landscapes on the doorstep in all directions to explore.

Step Inside:-

Step inside this handsome house that greets you with an appealing brick facade and a distinctive and delightful curved central section, and the entrance hall that greets you is a pleasure to behold.

The impressive double doors open into a grand space, flooded with cascades of light from the four windows within its curved design and a bespoke central staircase that commands attention.

But before being tempted to explore the first floor there are multiple fabulous spaces to discover on the ground floor, and the first is the separate living room to the right.



Overlooking the fantastic front garden, this inviting and spacious room includes a feature fireplace as the central spot from which to design furniture placement to create a sociable space that can welcome many to gather and watch the match or the movie.

But this room, separate from the busier areas of the house, can also offer a peaceful place to find some solitude and silence too.

On the opposite side of the hallway is the more practical area of the home, with a home office and study boasting built-in bespoke carpentry to provide seamless organisation, so every piece of paper, item of IT equipment, and general office paraphernalia all have their own place.

This more practical rather than social side of this pleasingly symmetrical house has been designed to support not just the effortless flow through the rooms and spaces that the whole house can boast, but a chance to be organised, offering a cloakroom, boot room, utility room and storage cupboard that ensures this busy family house runs smoothly.

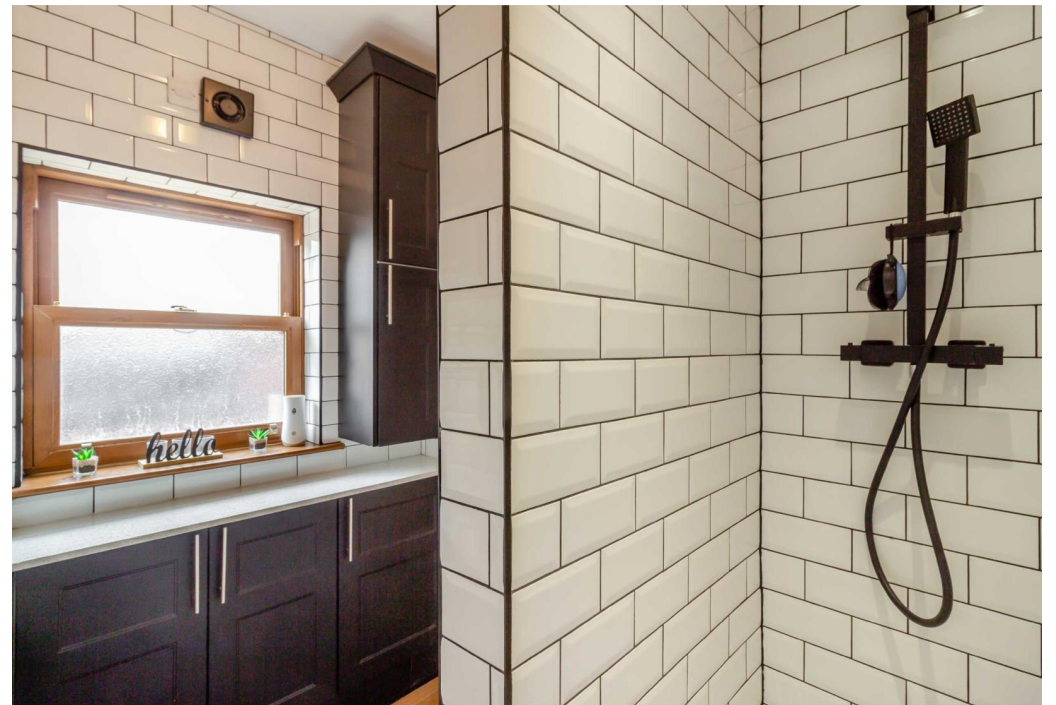
At the rear of this generously proportioned home there's an impressive kitchen lounge diner that is without doubt the heart of the home.

The sizeable kitchen, that can also boast underfloor heating, has oodles of cupboard storage and a large double fridge, and is well-equipped to cook a feast for family and friends, with a substantial island unit the stage on which to perform the preparation before the large range cooker takes over the cooking.

The bespoke kitchen design in solid wood ensures the room is an aesthetically pleasing place to be, as well as being very practical, and continues the attention to detail to add character features to this modern home that are found throughout the property.

A dining zone next to the kitchen offers a front row seat to watch the cook's performance as well as join them in chat before the meal is served.

Once the meal is done, the lounge is beckoning with big, comfy sofas and armchairs demanding you retire to the area to relax and continue the chat, gather around the television, or access the rear garden terrace via the set of French doors.





But finally, the statement staircase will entice you back to the grand hall to ascend up to the galleried landing and explore from this central location the five bedrooms waiting to impress.

All bedrooms are doubles and all can boast a dressing room with walk-in wardrobe, leaving the main sleeping area clutter free and utterly peaceful. Each bedroom is a sanctuary to retreat to at the end of the day complete with an inviting bubble bath, and a delightful space to greet you every morning as you stumble to the luxury ensuite for a refreshing shower.

From every window there's a view across the rooftops of the valley below or the private rear garden and if you can grab the principal bedroom before anyone else, the ensuite boasts a five-piece suite that any top hotel would be proud of.



Vendor Insight:-

"We designed and built the property ourselves 16 years ago and we love every little nook and cranny. Land was quite scarce to come by at the time, so to find something like this was very lucky indeed. Set in a quiet location with stunning mountain views, we have enjoyed living in peace and tranquility, yet everything we need is easily available too, so it's the best of both worlds here," say the owners.

"We have some nice long walks leading to the mountains right from our doorstep, so it's ideal for those who like to embrace an outdoor lifestyle. We have a good choice of supermarkets here too, as well as shops, restaurants, and pubs in the local area. It is quiet but most things are within walking distance or we just hop on the bus."



"Our garden is south facing and enjoys the sun from first thing in the morning all the way through until sunset. We have a couple of patio areas where we relax and entertain friends and family. It's very private, so it's perfect for hosting special events, including our son's graduation and a big birthday where we celebrated with our guests who partied with live music and tasty food from a fish and chip van on the driveway. There's plenty of space for a marquee to serve refreshments and the garden is fully enclosed, so it's safe for animals and children. It's a haven for wildlife too and we often see squirrels and an abundance of birds, including pheasants."

"We're going to miss everything about living here, not least the mountain views that are beautifully framed by windows on the landing and sitting room. We never tire of watching the changing seasons and different weather rolling in towards us. It's a very practical home as it combines formal reception rooms with office space and a utility room, so it's perfect for day-to-day life. We tend to spend most of our time in the Family Room comprising of the kitchen and living area as it has everything we need to enjoy time together. We must also mention the sauna and hot tub area, which is great for winding down and relaxing, as well as the man cave' in the garden that comes complete with bar, television, and fireplace. Friends often say that there's no need to go away on holiday as we have it all here!"





Step outside

Ty Y Teili

Step outside into a generous, low maintenance garden that can offer a practical, gated driveway providing ample parking and a large double garage that is hiding a surprise - a sauna.

The outside space of this modern home in an elevated valley position is party central, offering multiple places for social gatherings but also areas to relax at the very core of its design.

At the rear a private terrace offers a peaceful area to enjoy alfresco dining on either the terrace that hugs the house or on the raised deck that offers an elevated partial view across the garden to the valley hilltops on the horizon.

The bonus hot tub, and gazebo roof above it, is calling you for a dip in the bubbles with friends or family whatever the weather, as well as a chance to unwind in peace and privacy after a busy day.

But the front garden can easily compete as a place visitors and party guests will gravitate towards, and is a fabulous area well-loved by the owners of this incredible dream home too.

There's enough space for a range of garden sofas and alfresco dining sets on a large L-shaped terrace or on the central patio nestled within the lawn. Against the backdrop of a sizeable hedge and valley views the scenario of enjoyable time spent in this section of the garden is easy to imagine.

But this section of the impressive outdoor space can also boast a bonus outbuilding that's a mini garden pub complete with bar, seating area, and TV and even has a log burner that ensures it is an all-weather destination.

When the rain is bucketing down outside or the snow is falling and settling, this outdoor bar with the log burner throwing out waves of heat, is a cosy and comfortable place to gather and enjoy company or relax in solitude.

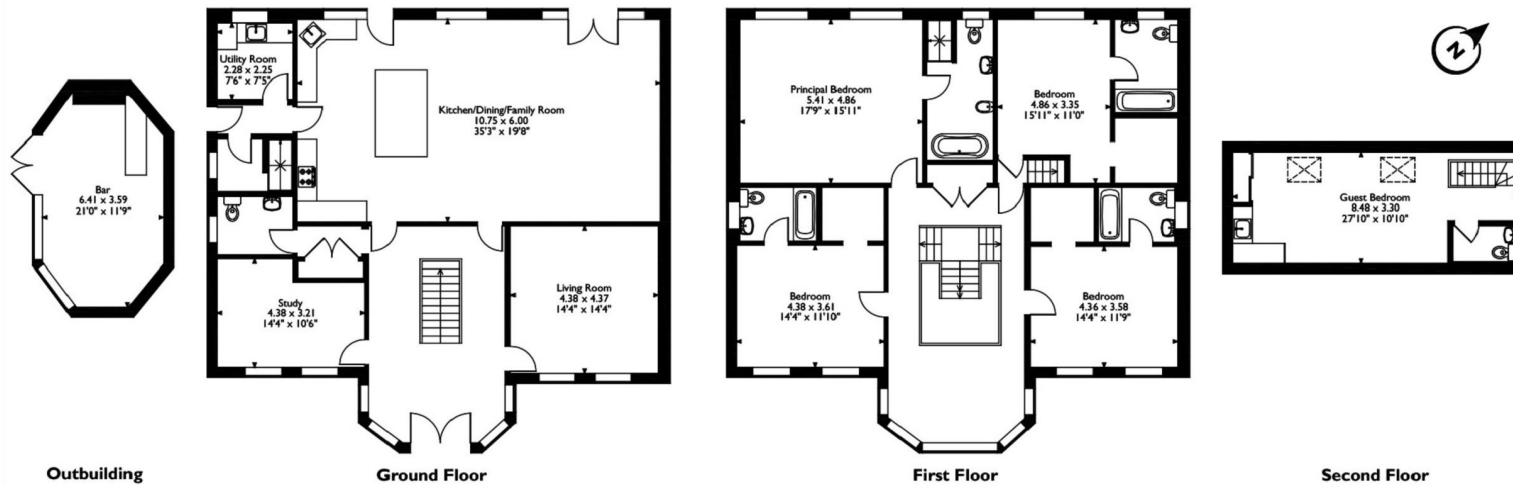
When the summer sun becomes too strong this party pub can offer welcome shade as well as surely a range of cocktails from the bar that makes every sunny day feel like you're on holiday.

DIRECTIONS

What3words: [///competent.acrobat.beak](#)



Ty Y Teili, FoundryView, Aberdare, Rhondda Cynon Taff

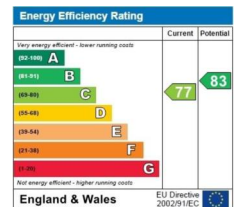


Please note that the location of doors, windows and other items are approximate and this floorplan is to be used for illustrative purposes only. Unauthorized reproduction is prohibited.

Postcode: CF44 6DW | Tenure: Freehold | Tax Band: F | Authority: Rhondda Cynon Taff | Heating: Gas | Drainage: Mains



*Internet speed according to the BT Availability Service using the postcode and landline
 All measurements are approximate and for general guidance only and whilst every attempt has been made to ensure accuracy, they must not be relied on. The fixtures, fittings and appliances referred to have not been tested and therefore no guarantee can be given that they are in working order. Internal photographs are reproduced for general information and it must not be inferred that any item shown is included with the property. Copyright© 2019 Fine & Country, Registered in England and Wales. Company Reg No. 09165140. Registered at 30 High Street, Chepstow, Monmouthshire NP16 5LJ





Fine & Country
Tel: 02921 690690
cardiff@fineandcountry.com
Sophia House, Cathedral Road, Cardiff, CF11 9LJ