



Nant Gwyn Bungalow
Werfa | Aberdare | Mid Glam | CF44 0YS

FINE & COUNTRY



Step inside

Nant Gwyn Bungalow

Offers over £695,000

Seclusion and tranquillity but with amenities and a village close by, Nant Gwyn encapsulates a true country home with family living at its core.

Having been lovingly and thoughtfully adapted and extended the property is surrounded by approximately 1.35 Acres of ancient woodland and formal gardens with a south westerly aspect, with inviting entrance hallway, two reception rooms and study, practical kitchen and utility, splendid conservatory with a multi fuel burning stove, galleried landing, five bedrooms, two bathrooms, workshop and garage.

The versatile accommodation is split across two floors and has previously been used successfully for multi-generational living, but would equally be suited to conventional family life.

On the edge of the Gethin Forest you cannot help but feel surrounded by nature, but with the amenities provided by nearby Aberdare and Merthyr Tydfil and of course there is easy access to Cardiff and Swansea by both road and rail, you really have the best of both worlds with Nant Gwyn.

A word from the current owners;

"We were looking for a rural location that was not terribly isolated, so this secluded house, surrounded by trees and birdsong yet part of a village community, was perfect, say the current owners of Nant Gwyn. Having grown up nearby and later worked as a librarian in Abermant, I knew this to be one of the nicest, friendliest villages in the area. We used to live in the neighbouring village and often walked the dogs along the old railway line across the valley towards Abermant, thinking each time how much we would like to live here."

"Nant Gwyn itself was originally the servants' quarters for Nant Gwyn House, though it has come a long way since those days, the owners continue. Now, it has been extended upwards and to the rear into a chalet style lodge with a full height galleried landing, two living rooms, and four bedrooms, though it retains stunning period features such as a beautiful carved oak fireplace in the older part of the house, in what was the living room of my mother's annex. Shortly after moving in, the first thing we did was to repair and restore the wonderful conservatory. We replaced the roof with a bespoke structure to hold a self-cleaning glass ceiling with integral blinds, and a multi-fuel burner which makes this wonderful space a permanent all year living and entertaining room. It is so wonderful to look up and see the stars and the trees, the roof opening up a vista to the woods outside."



"Leading into the conservatory is the open plan kitchen and dining room, providing a wonderful integrated living space, whether it's just the two of us or a houseful of friends and family."

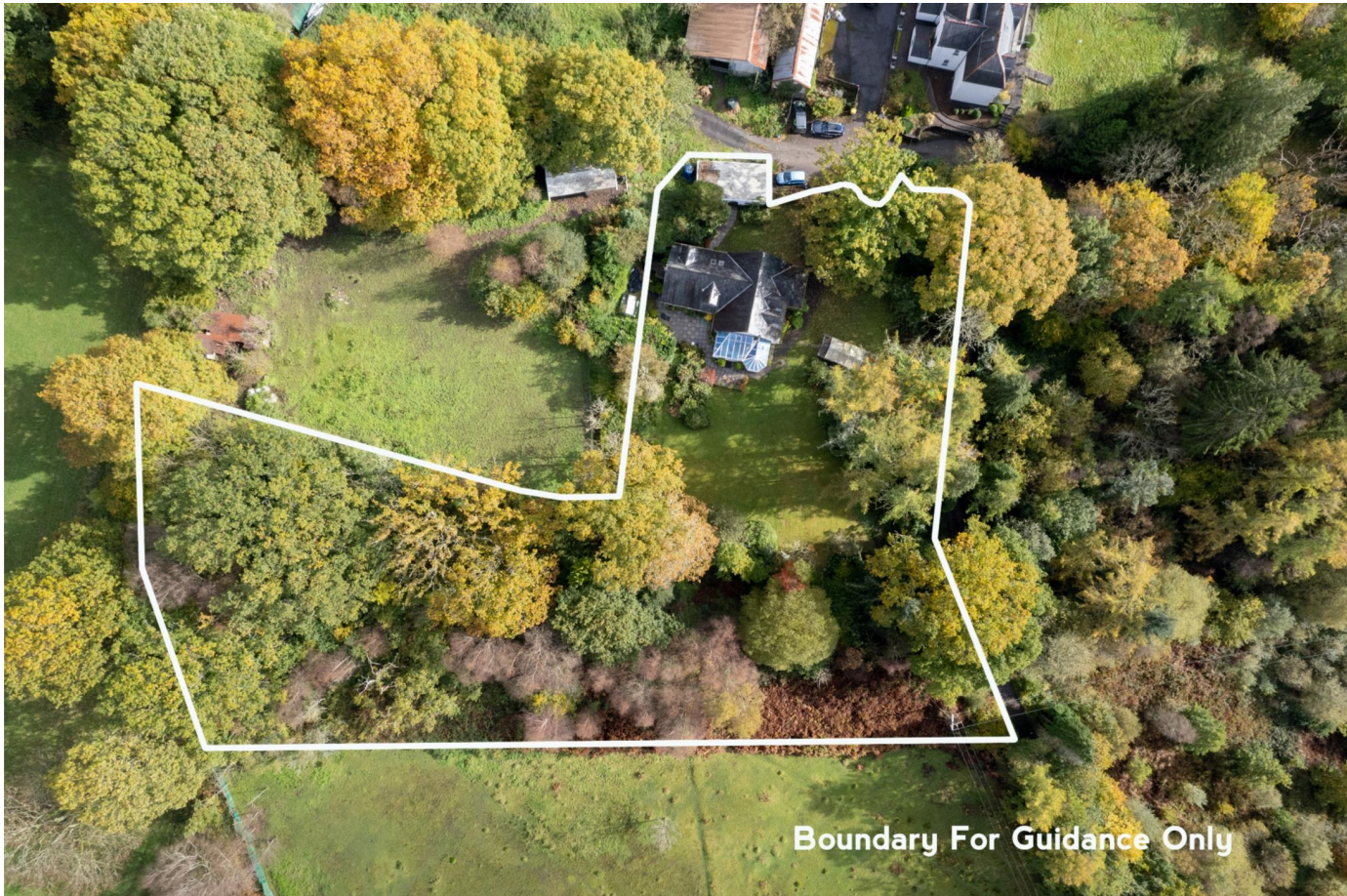
"Outside, the house is surrounded by gardens and woodland, on the edge of the Gethin Forest, say the owners. The very first summer we spent here, one of our dogs disappeared through a gap in the shrub border and discovered an additional 20 feet of land we didn't even know we had! The house is sited east-west so gets sun all day long as the sun travels over. The main garden faces south west, looking across the Cynon Valley on one side and flanked by the forested Merthyr Mountain on the other side. We sit at the front to get morning and early afternoon sun and at the back for evening entertaining on the rear terrace, enjoying a riot of colour throughout the seasons, from azaleas and wisteria in spring to evergreens and winter roses. The woodland is a totally different natural experience, as it has pathways through bluebells to a gladed picnic area under a 400 year old oak tree."

"Our most special memory of the garden is a summer family celebration for a birthday before the covid lockdowns, the owners continue, We had a marquee on the lawn, lights in the trees, and solar lamps through the woodland paths. Family and friends were all wandering around into the night with lanterns and torches to enjoy the entire outdoor space, right up to the ancient oak tree; or finding a quiet space indoors to just relax and chatter. This was a true demonstration of Nant Gwyn at its best: a real family home with space for people to socialise in a large indoor and outdoor space."

"The wild birds and bats in the garden and beautiful surrounding woodland, which we feed and provide nesting boxes for, are a big part of our life at Nant Gwyn."







Step outside

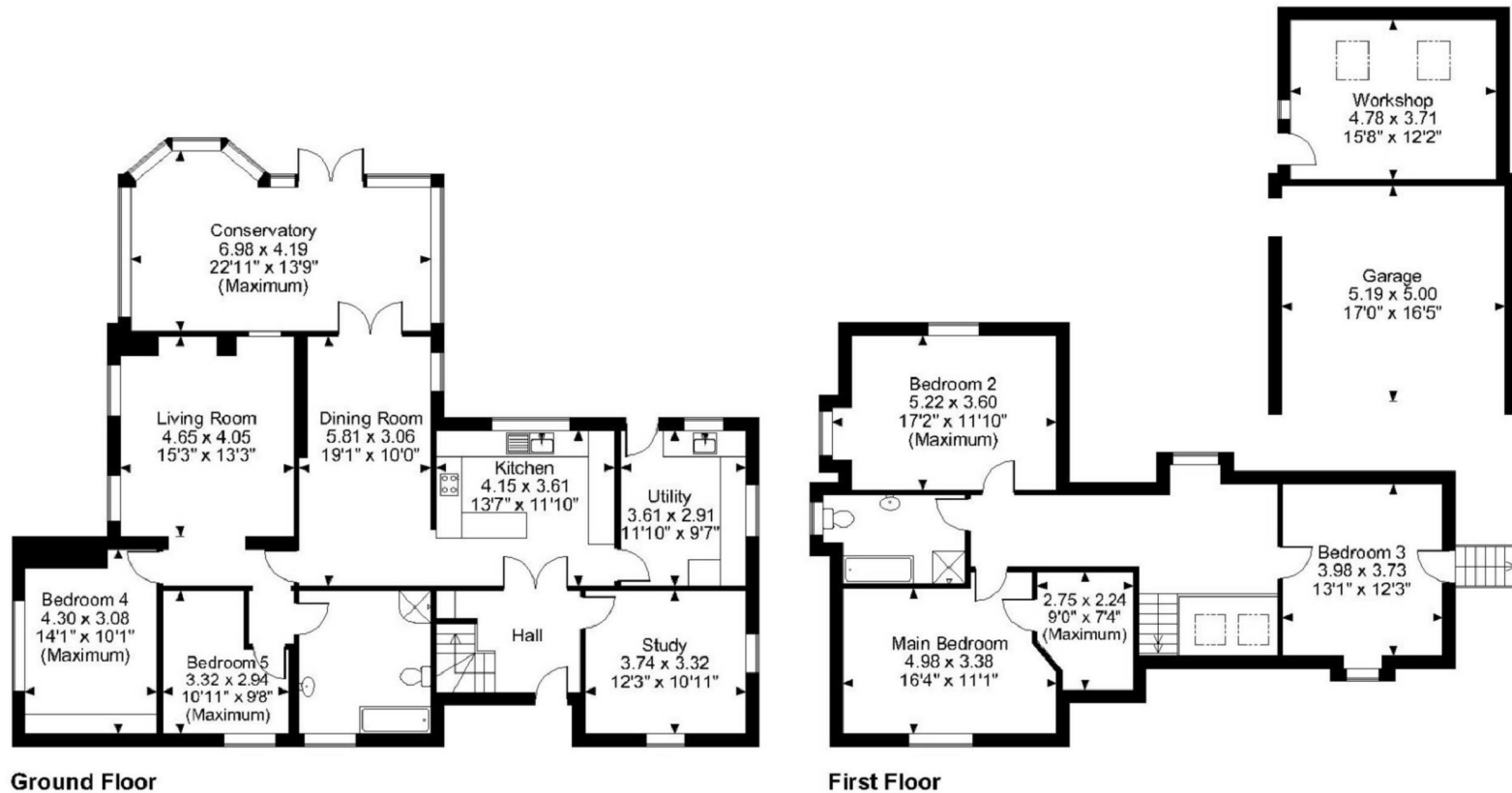
Nant Gwyn Bungalow

DIRECTIONS

What3words: ///casual.loudly.phones



Nant Gwyn Bungalow, Werfa, Aberdare, Mid Glamorgan
Approximate Gross Internal Area
Main House = 2468 Sq Ft/229 Sq M
Garage/Workshop = 478 Sq Ft/44 Sq M



FOR ILLUSTRATIVE PURPOSES ONLY - NOT TO SCALE

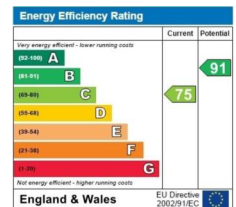
The position & size of doors, windows, appliances and other features are approximate only.

© ehoush. Unauthorised reproduction prohibited. Drawing ref. dig/8519746/MPE

Postcode: CF44 0YS | Tenure: Freehold | Tax Band: F | Authority: Rhondda Cynon Taff | Heating: Gas LPG | Drainage: Private



*Internet speed according to the BT Availability Service using the postcode and landline
 All measurements are approximate and for general guidance only and whilst every attempt has been made to ensure accuracy, they must not be relied on. The fixtures, fittings and appliances referred to have not been tested and therefore no guarantee can be given that they are in working order. Internal photographs are reproduced for general information and it must not be inferred that any item shown is included with the property. Copyright© 2019 Fine & Country, Registered in England and Wales. Company Reg No. 09165140. Registered at 30 High Street, Chepstow, Monmouthshire NP16 5LJ





Fine & Country
Tel: 02921 690690
cardiff@fineandcountry.com
Sophia House, Cathedral Road, Cardiff, CF11 9LJ

